

SOUVENIR



New Entertainment
:: Hall ::

Trentham Gardens,
1931.

New
Entertainment Hall

Trentham Gardens Magnificent New Entertainment Hall.

FOREWORD.

The above Hall is practically completed and is now ready for use. There is probably no Dance Hall in London to surpass it and it certainly cannot be equalled in the provinces.

The capacity of the Dance Floor—all of polished and waxed maple boarding—has an area of nearly 18,000 square feet. When not used for dancing, the floor will be covered with stout druggetting, held in position by special brass studs sunk in the floor to the floor level.

The Decoration of the Hall has a remarkably artistic and pleasing effect. The ceiling, which is tinged throughout in various shades, gradated from sky blue in its centre, followed by beige and afterwards apricot at its sides, is most effective.

The Proscenium, the pillars, the lofty window arches and the ornamental plaster work are throughout decorated in various shades of gold, dead black, and sealing wax red, all of celluloid lacquer work.

The Lighting is extremely effective. The large pendant lamps in the auditorium, with their variegated shades of oiled silk, diffuse a soft but powerful illumination in the spacious promenades, on either side of the auditorium there has been fixed the beautiful bronze lamps which formerly belonged to Trentham Hall. These shed abroad beams of light of a rich orange tint. The stage of the auditorium is likewise brilliantly illuminated, more especially by its footlights.

The Architect for the building—Mr. Stanley T. Drew, of New Court, Lincoln's Inn, London,—has throughout, both as regards the interior and exterior, been careful to carry out the style and character—Italian Renaissance—of the former mansion.

From the promenades of the Hall charming views of the gardens outside are obtained through the range of large doors and lofty windows which are continued throughout both sides of the Entertainment Hall.

Along the whole of the western side of the Hall there is a magnificent avenue of fine and lofty beech trees; the lower branches of which have been lopped just sufficiently to admit of unobstructed views of the Gardens.

The space underlying the beech avenue is being laid out in a series of grass terraces and broad gravelled walks, where it is intended that alfresco teas shall be served.

1931

Telephone 49180

W. Ainsworth :
Blacksmith, Wheelwright,
Joiner and Garage Proprietor,

Trentham.

Specialities :

Carts, Wagons, Floats, Wheelbarrows, Motor Bodies, Motor Houses, Etc.
Field and Ornamental Gates. Windows, Doors and Joinery Work made
and fixed to order.

Wire Netting, Barbed Wire and General Farmers' and Garden Tools always
in stock at Competitive Prices.

New
Entertainment Hall

FOREWORD—continued.

The Equipment.

The Equipment of the Hall is entirely in keeping with the building itself. Teas will be served on polished oak tables having plate-glass tops. The whole of the table china, of elegant design, is lavender blue, to harmonise with the decoration of the building. The table plate and cutlery has all been obtained from first-class firms. The wicker elbow chairs for these tables are of the lounge type and are most comfortable.

The spacious entrance foyer with its harmonious decorative scheme, together with its black and white tiled floor is well in keeping with the building to which it gives access.

The former Tea and Refreshment Rooms have in addition a granolithic floor and electric light. The tiled and beautifully fitted lavatories and adjacent cloakroom are a great acquisition.

A notable feature of the new building is its Kitchen, having a floor space of 60 feet by 40 feet. This is fully equipped with Gas Fitted Cooking Ranges, Hot Water Boilers, Etc. There are also an extensive range of Service Counters.

Ample means of access to the Hall from the main road are afforded by a newly constructed roadway 24-ft. in width, bordered on either side by side walks. At the junction of this carriage approach with the main road, there are now being fixed the stone entrance lodges, palisading and gates which, until recently, were in position at the main entrance to the mansion from the Park. Along this roadway cars can drive either to the Hall, or, if preferred, across the river Trent by the new iron bridge 28 ft. in width, which leads directly to the enclosed parking ground.

Former treasures, in the way of old sculptures, bronzes, vases, &c., which were taken away are coming back and are being erected in their former positions. Some of these works of art are almost priceless.

The Structural Steelwork Contract was carried out by Messrs. Smith Walker Ltd., of 16, Cannon Street, Westminster, W. 1.

The Metal Window Contract was carried out by the Standard Metal Window Co., of West Bromwich.

The Contract for the ceiling of the Hall, which is lined with "Donnacona" Insulating Board was carried out by The Anglo-Colonial Trading Corporation Ltd., of 56, Southwark Street, London, S.E. 1.

The Contract for the Heating, Hot Water Supplies, Cooking, Plumbing and Glazing was carried out by Wm. Freer Ltd., of 49, Red Lion Street, High Holborn, London, W.C. 1.

The Contract for the Constructional Timber, Counters, Screens, Foyer and Auditorium Doors, Ray-Rad Column Casings, Panelled Quick Server, &c., was carried out by Newcastle Saw Mills, Ltd., Newcastle, Staffs.

The Contract for the General Haulage was carried out by Alfred Hissey & Son, Turbine Farm, Hanford.

The Contract for the Decorations throughout was carried out by Messrs. Goodworks Ltd., Retreat Place, Homerton, E.

The Contract for General Work was carried out by W. Ainsworth, Garage, Joiner, etc., of Trentham.

Modern Fireproof Construction demands
METAL WINDOWS of QUALITY

and that is the reason why the whole of the Steel Windows and Lantern
Lights in Trentham Entertainment Hall were supplied by the

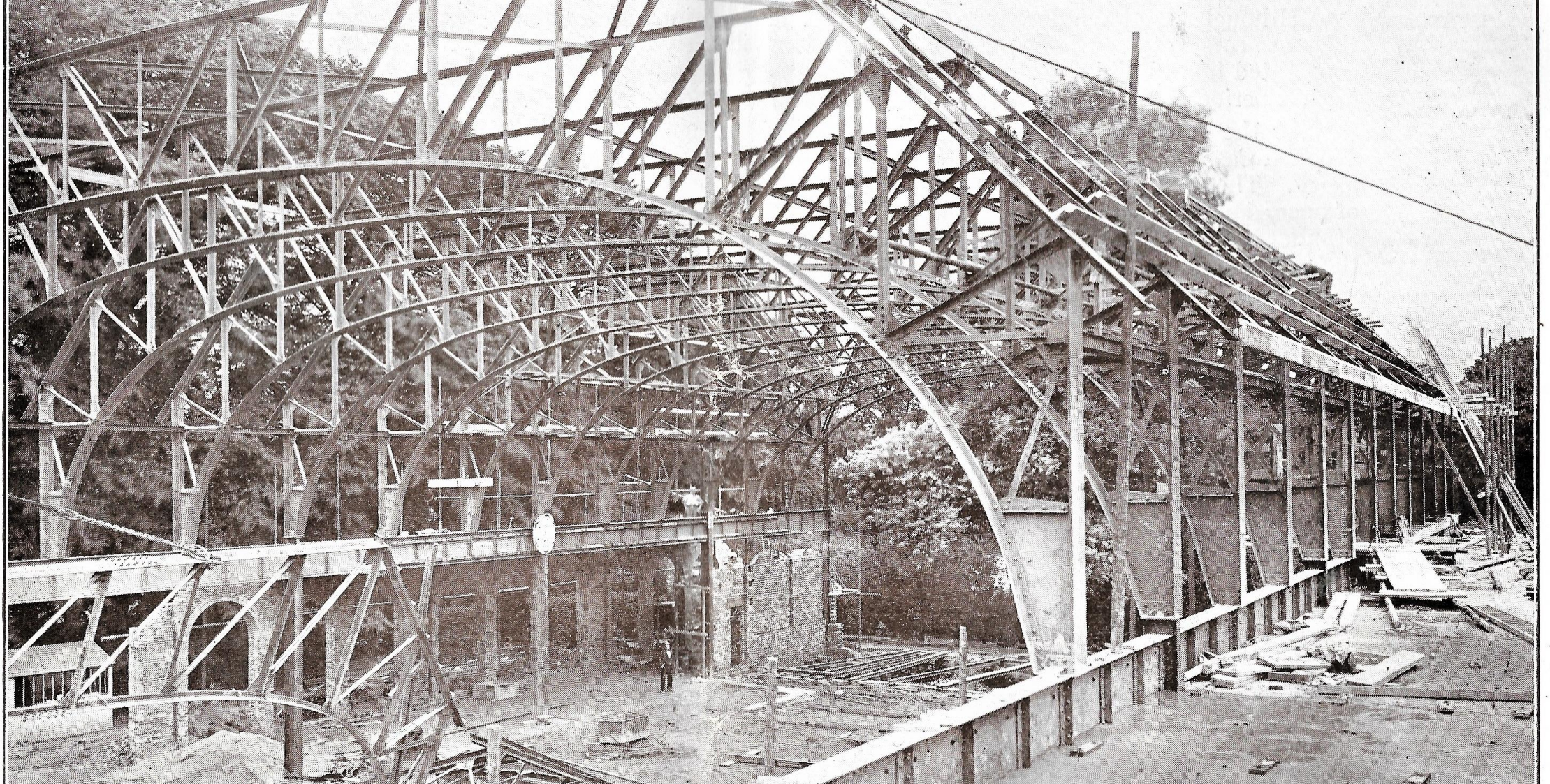
STANDARD METAL WINDOW CO.,
WEST BROMWICH.



The illustration shows
a recent conversion of
an old building above
Shopping Premises.

The Steel Windows
and Steel Panels being
set in Artificial Stone.

We manufacture all kinds of Metal Windows, Steel Fireproof Doors, Steel Partitions, Skylights,
Leaded Lights, Etc. Send for Latest List and let us have your specification.



TRENTHAM GARDENS ENTERTAINMENT HALL

PHOTO TAKEN 2ND OCT: 1930.

CONSTRUCTIONAL STEELWORK
DESIGNED, SUPPLIED AND ERECTED BY:-

SMITH WALKER LTD

16, CAXTON STREET, 6

PHONE: VICTORIA 2123. WESTMINSTER. S.W.1.

The Steelwork Contract - Executed by Smith Walker Ltd.

The accompanying photograph, taken during the course of erection, gives a very good idea of the complicated steelwork necessary to frame this large Hall.

The Main Hall is 180 feet long and 76 feet wide, and the whole of the weight of the roof, roof covering and false ceiling carried on a framework of steel.

A steel and concrete flat floor is provided over the side promenades each of which are 16 feet wide. The steel framing for these side roofs is carried on the girders supporting the roof trusses over the Main Hall and on the side external walls.

In order that there should be a minimum of obstruction between the Main Hall and the side promenades, stanchions were placed at every third roof girders and the intermediate girders were carried on deep plate girders spanning between the stanchions.

The bottom booms of the roof girders are curved to the shape of the ceiling, and the height of the underside of these roof girders from the point of their springing at the eaves is over 18-ft. and 18-ft. above floor level.

These girders were delivered to the site in four pieces, and the separate pieces assembled into complete girders on the site. It was originally intended to deliver these girders in halves, but owing to extreme difficulties in transport—due to the great depth of these girders—this programme had to be altered.

The side slopes of the roof over the Main Hall are returned across the width of the Hall at each end, introducing an intricate system of half girders and hip girders, since at each end of the framing is also arranged to incorporate a horizontal lattice girder resisting the wind pressure on the ends of the buildings.

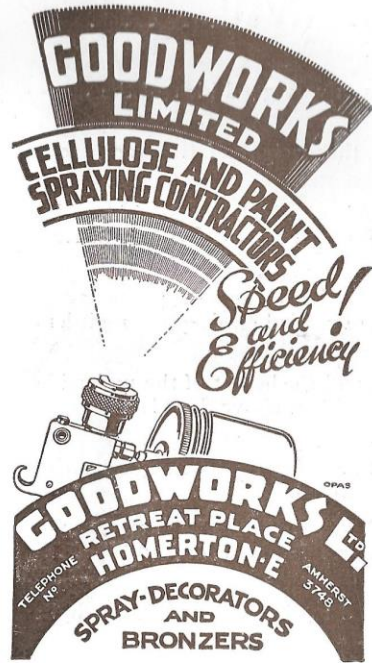
The framing to the proscenium opening is carried out in steelwork designed to give a very stiff but light box frame. This framework is arranged so that it can be removed, if necessary, at a later date.

The roof at the back of the Hall over the Foyer and Service quarters is framed in steel and carried on steel stanchions and on the external walls.

To speed up the erection, sleeper roadways were laid through the job to facilitate the movements of the heavy pieces of steelwork, and all the roof work and complicated steel framing was assembled and erected on the site without a hitch, all the separate pieces of steelwork coming together perfectly: and the Steelwork Contractors were able to work exactly to scheduled dates originally arranged.

The whole of the steelwork is of BRITISH manufacture and the work was carried out by BRITISH designers and workmen, by Messrs. Smith Walker Limited., 16 Caxton Street, S.W., under the direction and instructions of the Architects—Messrs Stone & Drew, of London.

Trentham Gardens Entertainment Hall



Decorated throughout by
the modern process of
Compressed Air Machines

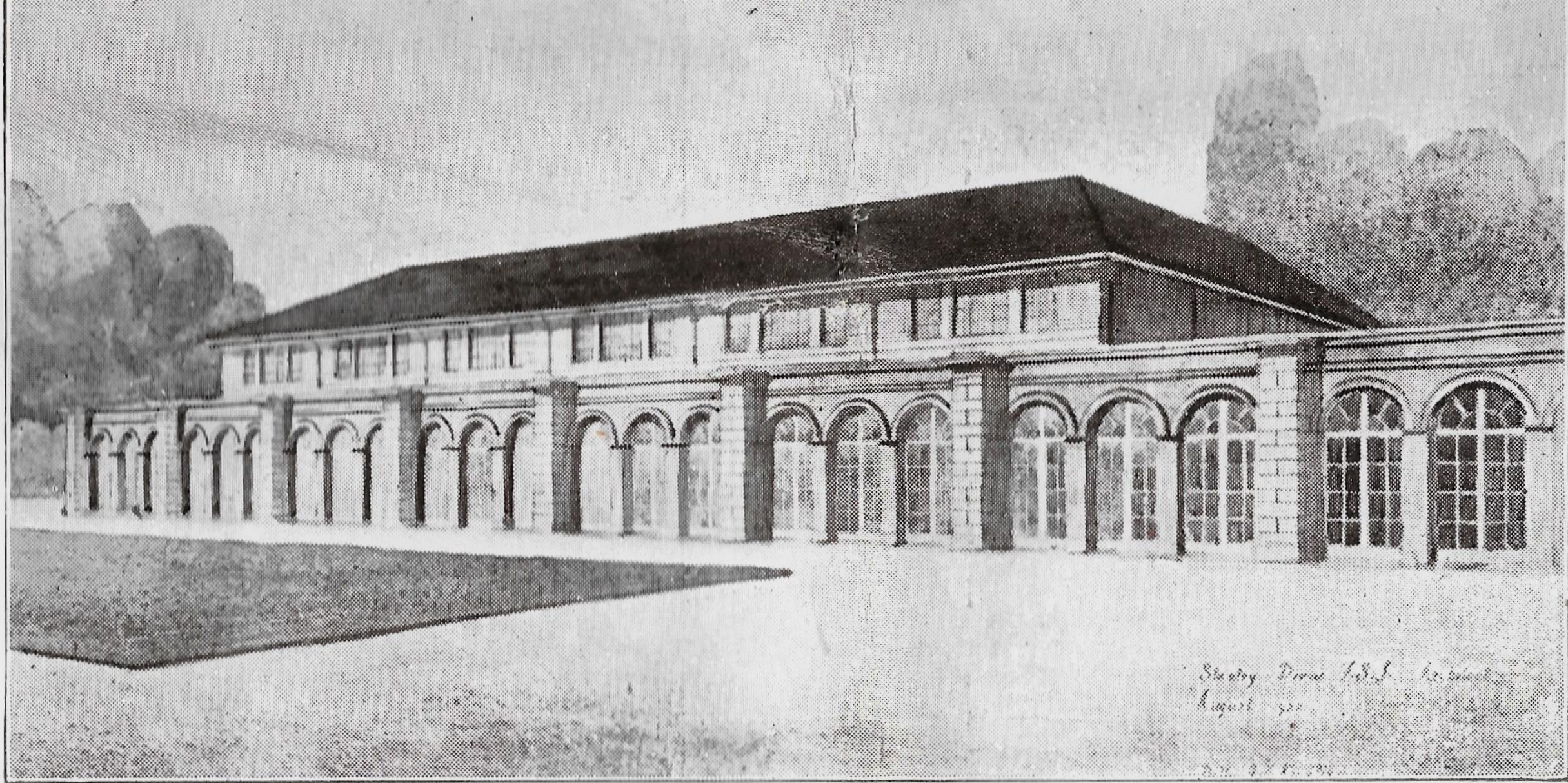
by

Goodworks L^{TD.}

London's Foremost Decorators.

Colour Schemes, Plans & Estimates Free.

Country House Decoration a Specialité.



Designed by

Stanley T. Drew, Architect, New Court, Lincoln's Inn, London.

Exterior of New Entertainment Hall.

“DUP
LUS”

TRENTHAM HALL

Est.
1
8
8
8

HEATING
HOT WATER SUPPLIES,
COOKING, PLUMBING, AND GLAZING

carried out by

William Freer Ltd.,

49, Red Lion St., High Holborn,
W. C. 1.

'Phone : Chancery - - 7601—2 Two Lines.

Head Office and Works,
Leicester.

St, George's Plain,
Norwich.



Designed by

Stanley T. Drew, Architect, New Court, Lincoln's Inn, London.

Interior of New Entertainment Hall.

New Entertainment Hall, TRENTHAM.

The General Haulage in connection with the above
Hall was carried out by

Alfred Hissey & Son,
HAULAGE CONTRACTORS,
Turbine Farm, Hanford.

— — Distance no object. — —

Motor Repairs of all descriptions carried out.

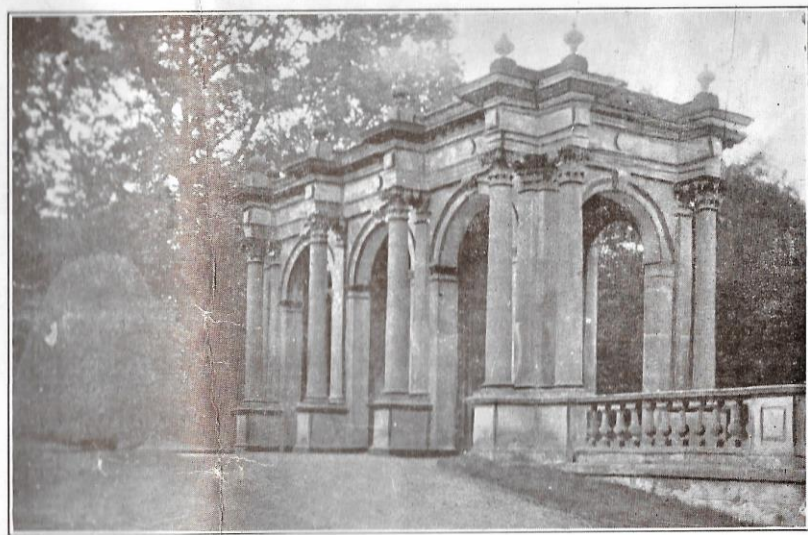
Day and Night Service.

'Phone: Trentham 49145.



Rose
Gardens.

Temple in
Italian Gardens.



Donnacona the Empire Insulating and Building Board was used for the construction of the ceiling of the Entertainment Hall at Trentham Gardens

This insulating board is equally adaptable to the needs of factories, offices, and private houses. Makes interiors cool in summer and warm in winter.

Write for interesting folder from the Sole Distributors.

DONNACONA

INSULATING
AND



BUILDING
BOARD

*Made by Price Brothers & Company Ltd
Quebec, Canada - Established over 100 Years*

Sole Distributors for Great Britain & Irish Free State :-

THE ANGLO-COLONIAL TRADING CORPORATION LTD.

Sales Office : 56 Southwark Street, London, S. E. 1, Telephone : Hop. 3900 & 4189.
Glasgow : 110 Crawford Street, C. 5.

New
Entertainment Hall

A feature worth noting is the ceiling of the Entertainment Hall which is lined with "DONNACONA" INSULATING BOARD, an Empire product from the Canadian Forests.

"DONNACONA" is utilised in this instance as an acoustic medium in order to ensure that perfect tone effects are obtained when the hall is being used as a Cinema.

"DONNACONA" is manufactured from selected wood fibre and possesses great tensile and constructional strength. The surface is rough cast on one side, which absorbs the sound waves - giving an even tone all frequencies and freedom from reverberation.

In the case of Trentham Gardens the problem of acoustics has been surmounted by the use of "DONNACONA" - the aristocrat of insulating boards, whilst the decorative effects obtainable upon the stippled surface of the board are shown to advantage on the curved ceiling.

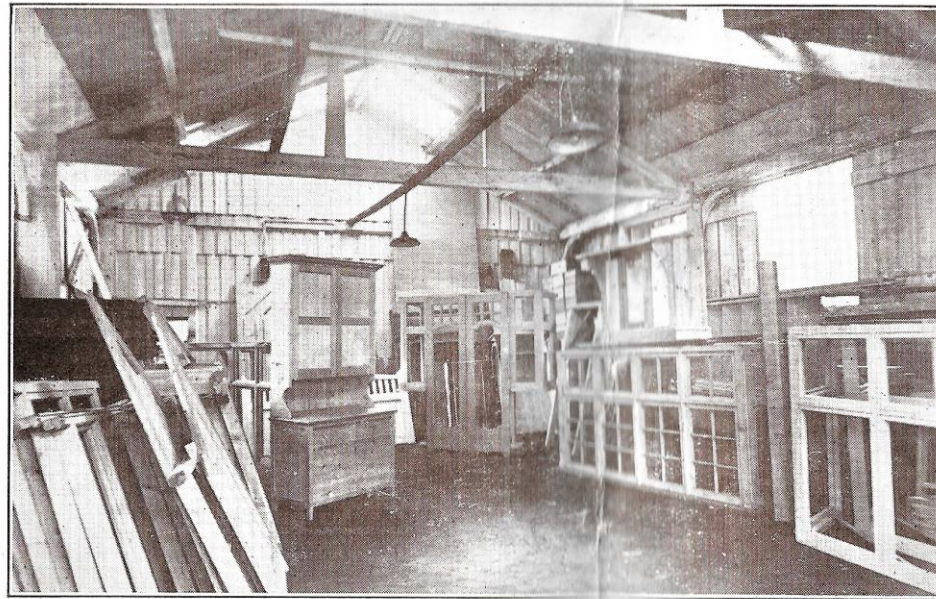
'Phones : 6245-6246.

'Grams : "Timber."

Newcastle Saw Mills Ltd.,

Newcastle. Staffs.

In addition to constructional timber, Messrs. Newcastle Saw Mills Ltd., supplied Counters, Screens, Foyer and Auditorium Doors, Ray-Rad Column Casings, Panelled Quick Server, &c., &c., for the New Entertainment Hall, Trentham.



We hold the largest and most varied stock of **TIMBER** in the Midlands.

JOINERY. We are actual makers. Doors, Windows, Stairs, Gates, etc.

PLYWOOD & WALLBOARDS
We are appointed Agents for all the leading types.

Fencing. Cresoting.

SOUVENIR



New Entertainment
:: Hall ::

Trentham Gardens,
1931.